

<https://github.com/imx6-dongle>
<https://github.com/imx6-dongle/wiki/wiki>
<https://github.com/imx6-dongle/wiki/wiki/GK802-hardware>

- kernel 4.4 <https://github.com/dpavlin/linux-udoo>
- u-boot <https://github.com/dpavlin/u-boot-imx6dongle>

tar xvzf 2016030650 [0,0]

Contents: [Dobrica Pavlinu's random unstructured stuff]

- [Dobrica Pavlinu's random unstructured stuff \(chroot\)](#)
- [Dobrica Pavlinu's random unstructured stuff \(u-boot\)](#)
 - ◆ [Dobrica Pavlinu's random unstructured stuff \(compile\)](#)
 - ◆ [Dobrica Pavlinu's random unstructured stuff \(dut\)](#)
 - ◆ [Dobrica Pavlinu's random unstructured stuff \(boot\)](#)
- [Dobrica Pavlinu's random unstructured stuff \(kernel\)](#)
 - ◆ [Dobrica Pavlinu's random unstructured stuff \(sources\)](#)
 - ◆ [Dobrica Pavlinu's random unstructured stuff \(compile kernel 4.4\)](#)
 - ◆ [Dobrica Pavlinu's random unstructured stuff \(compile 3.0.x\)](#)
- [Dobrica Pavlinu's random unstructured stuff \(pinout\)](#)
- [Dobrica Pavlinu's random unstructured stuff \(Serial\)](#)
- [Dobrica Pavlinu's random unstructured stuff \(XBMC\)](#)
- [Dobrica Pavlinu's random unstructured stuff \(Linux\)](#)

Bus 001 Device 045: ID 15a2:0054 Freescale Semiconductor, Inc. i.MX6Q SystemOnChip in RecoveryMod

chroot

```
root@nuc:/tmp/n3# cp `which qemu-arm-static` usr/bin/  
root@nuc:/tmp/n3# chroot .  
root@nuc:/# uname -a  
Linux nuc 4.4.0-1-amd64 #1 SMP Debian 4.4.4-1 (2016-03-07) armv7l GNU/Linux  
root@nuc:/# file /bin/bash  
/bin/bash: ELF 32-bit LSB executable, ARM, EABI5 version 1 (SYSV), dynamically linked (uses share
```

u-boot

compile

<https://github.com/imx6-dongle/wiki/wiki/U-Boot-basics>

```
dpavlin@nuc:/nuc/imx6/uboot-imx6dongle$  
  
sudo apt-get install make gcc-arm-none-eabi libusb-1.0  
  
export ARCH=arm  
export CROSS_COMPILE=arm-none-eabi-  
  
make gk802_config  
  
make
```

dut

```
pi@rpi2 ~/imx6/uboot-imx6dongle $ git remote -v  
origin https://github.com/imx6-dongle/uboot-imx6dongle (fetch)  
origin https://github.com/imx6-dongle/uboot-imx6dongle (push)  
  
pi@rpi2 ~/imx6/uboot-imx6dongle $ make gk802_config  
Configuring for gk802 - Board: gk802, Options: IMX_CONFIG=board/freescale/imx/ddr/mx6q_4x_mt41j12  
  
pi@rpi2 ~/imx6/uboot-imx6dongle $ sudo apt-get install libusb-1.0  
  
make gk802_config tools  
  
sudo ./tools/imxboot /nuc/imx6/uboot-imx6dongle/u-boot.imx
```

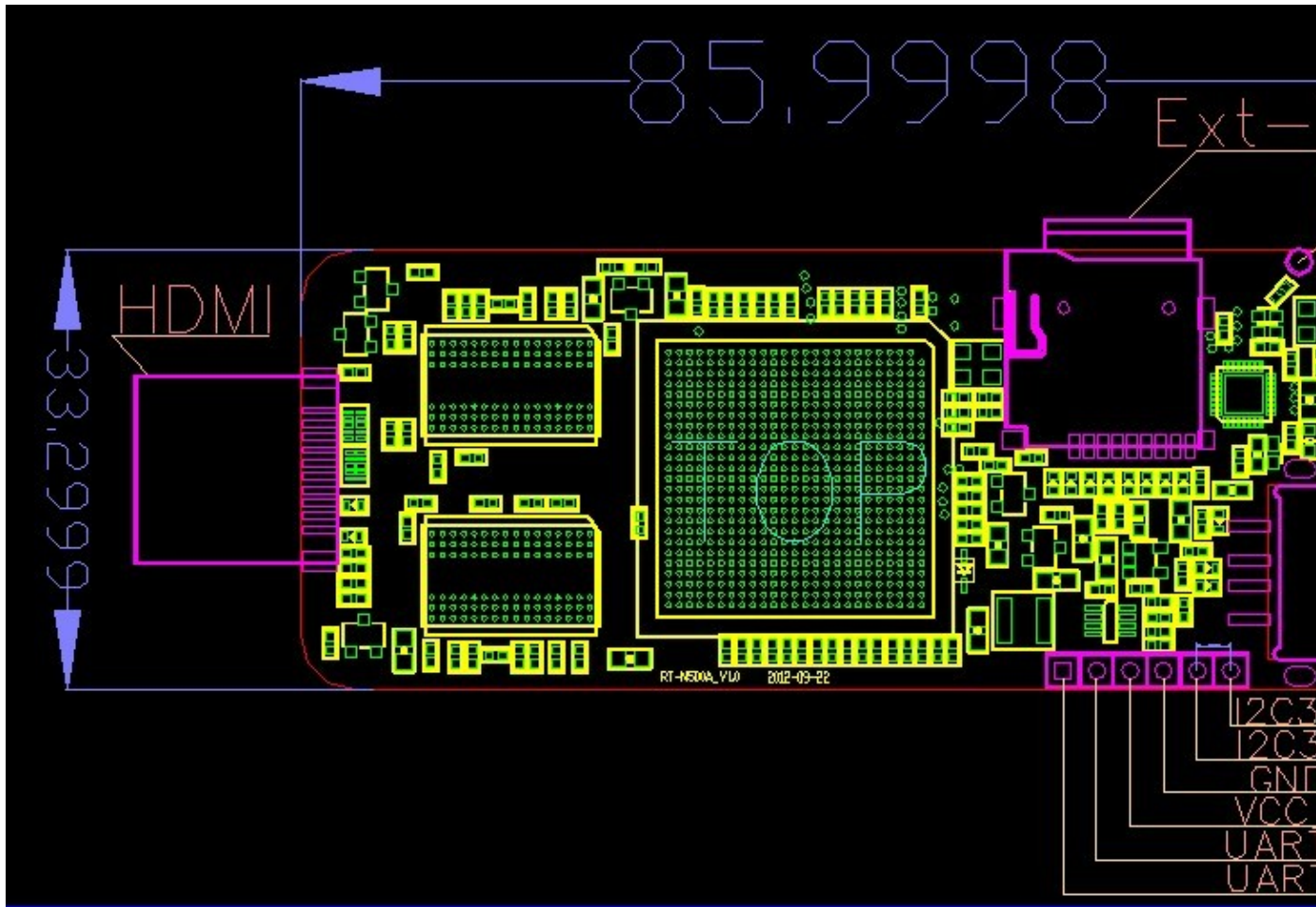
boot

```
CPU: Freescale i.MX6Q rev1.1 at 792 MHz  
CPU: Temperature 12 C, calibration data: 0x5834de7d  
Reset cause: POR  
Board: MX6Q-gk802  
DRAM: 1 GiB  
MMC: FSL_SDHC: 0, FSL_SDHC: 1  
enable_hdmi: setup HDMI monitor  
Display: HDMI (1024x768)  
In: serial  
Out: serial  
Err: serial
```

kernel

sources

- <https://github.com/imx6-dongle/linux-imx>



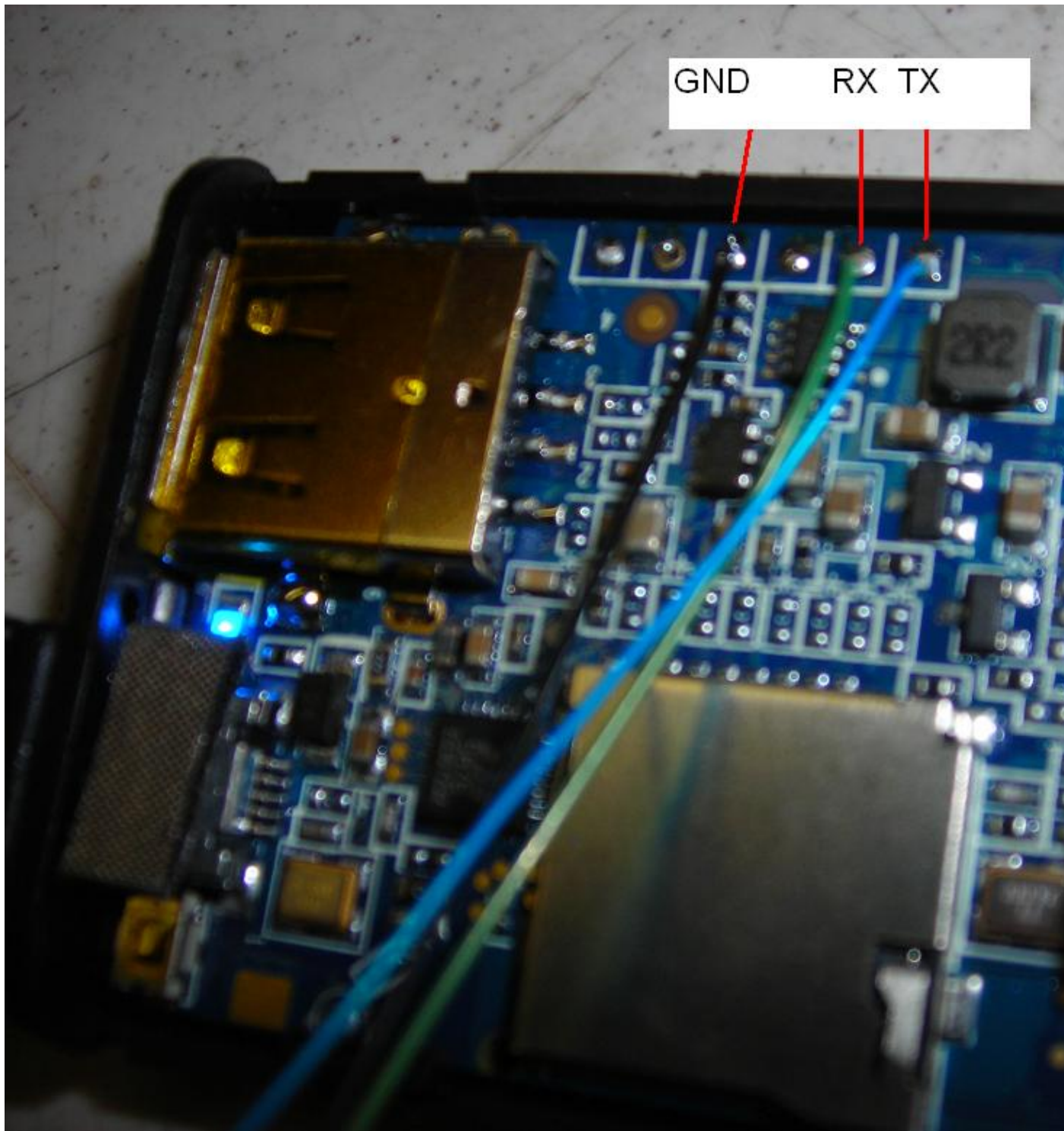
older stuff

Hi-802 is clone of this one

- <http://www.geekbuying.com/item/Unii-GK802-Fresscale-i-MX6-Quad-Dure-Cortex-A9-DDR3-1GB-R>
- <http://forum.xda-developers.com/showthread.php?t=2044045>
- FULL micro-sd images
<http://www.armvtech.com/armvtechforum/viewtopic.php?f=51&t=1113>
- root <http://www.armvtech.com/armvtechforum/viewtopic.php?f=50&t=226&start=80#p4516>
- production, motherboard pictures <http://www.hiapad.com/?p=1994>

Serial

<http://www.armvtech.com/armvtechforum/viewtopic.php?f=50&t=226&start=210#p6651>



XBMC

external player

<http://www.xbmcandroid.com/2012/12/10/how-to-install-xbmc-nightly-with-external-player-on-the-mk802-stic>

Linux

http://www.junklet.net/test/gk802_boot.txt

<http://wiki.linaro.org/Boards/MX6QSabreLite>

<http://boundarydevices.com/linaro-12-09-for-i-mx6/>